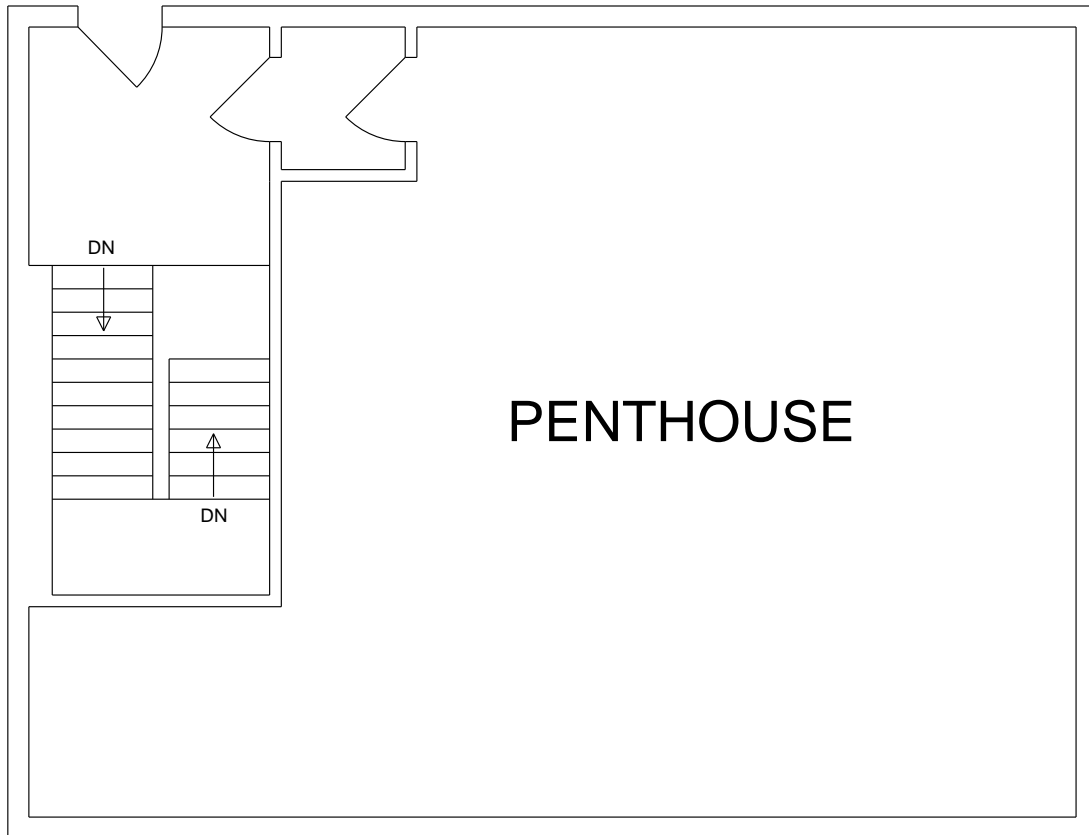



The area was measured in accordance with lease requirements as per BOMA standards "ANSI/BOMA Z65.1-1996. Please see accompanying BOMA spreadsheet for the usable, basic rentable and rentable area for each unit.



	ACUTEC FACILITY DATA CORPORATION <small>#202, 12212 - JASPER AVE. EDMONTON, AB T5N 3K3</small>		<small>BUS: (780)-413-4895 FAX: (780)-413-4896</small>		PENTHOUSE SAMPLE BUILDING AS - BUILT DRAWING
	<small>DRAWN BY:</small>	<small>DATE</small>	<small>CHECKED BY:</small>	<small>DATE</small>	<small>COMMENTS:</small> SAMPLE DRAWING ONLY
	<small>SCALE:</small> <p style="text-align: center;">NTS</p>	<small>DRAWING:</small>			