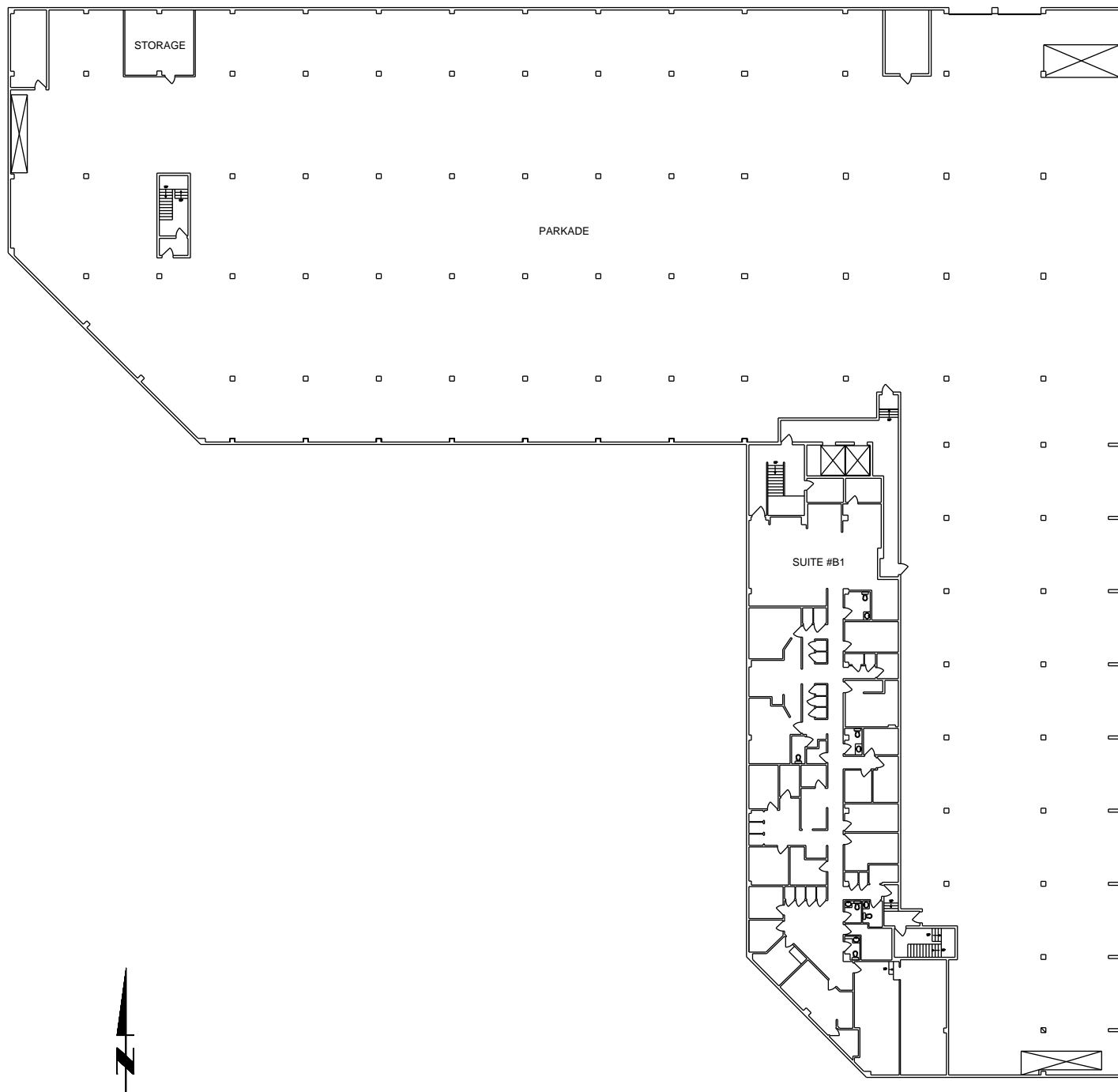


The area was measured in accordance with lease requirements as per BOMA standards "ANSI/BOMA Z65.1-1996. Please see accompanying BOMA spreadsheet for the usable, basic rentable and rentable area for each unit.



ACUTEC
FACILITY DATA CORPORATION

#202, 12212 - JASPER AVE.
EDMONTON, AB T5N 3K3

BUS: (780)-413-4895
FAX: (780)-413-4896

DRAWN BY: _____ DATE _____ CHECKED BY: _____ DATE _____

SCALE: **NTS** DRAWING: _____

BASEMENT / PARKADE
SAMPLE BUILDING
AS - BUILT DRAWING

COMMENTS:
SAMPLE DRAWING ONLY